

測試報告

Test Report

號碼(No.) : CT/2019/71325

日期(Date) : 2019/08/12

頁數(Page) : 1 of 3

晨翔紙業股份有限公司

CHEN XIANG PAPER CO., LTD.

新北市新莊區五權二路24號8樓之2

RM. 2, 8F., NO. 24, WUQUAN 2ND RD., XINZHUANG DIST., NEW TAIPEI CITY 24892, R. O. C.


以下測試樣品係由申請廠商所提供及確認 (The following sample(s) was/were submitted and identified by/on behalf of the applicant as) :

送樣廠商(Sample Submitted By) : 晨翔紙業股份有限公司 (CHEN XIANG PAPER CO., LTD.)
樣品名稱(Sample Description) : PAPER STRAW (紙吸管)
樣品材質(Sample Material) : 紙、膠
原產國(Country of Origin) : 台灣 (TAIWAN)
收件日期(Sample Receiving Date) : 2019/07/31
測試期間(Testing Period) : 2019/07/31 TO 2019/08/12

測試需求(Test Requested) :

客戶指定依據美國聯邦法規之藥物暨食品管理(FDA) 21 CFR 176.170(使用條件E)進行測試。測試項目請參閱測試結果表格。 / As specified by client, the sample(s) was/were tested according to U.S. Food and Drug Administration (FDA) 21 CFR 176.170 (Condition of use E) to conduct test. Please refer to result table for testing item(s).

測試結果(Test Results) : 請參閱下一頁 (Please refer to following pages).


Singh Hsiao / Sr. Supervisor
Signed for and behalf of
SGS TAIWAN LTD.
Chemical Laboratory - Taipei



測試報告

Test Report

號碼(No.) : CT/2019/71325

日期(Date) : 2019/08/12

頁數(Page) : 2 of 3

晨翔紙業股份有限公司

CHEN XIANG PAPER CO., LTD.

新北市新莊區五權二路24號8樓之2

RM. 2, 8F., NO. 24, WUQUAN 2ND RD., XINZHUANG DIST., NEW TAIPEI CITY 24892, R.O.C.

測試結果(Test Results)

測試部位(PART NAME)No. 1 : 白色紙吸管 (WHITE PAPER STRAW)

通過(PASS)

測試項目 (Test Items)	單位 (Unit)	測試方法 (Method)	MDL	結果 (Result)	限值 (Limit)
				No. 1	
蒸發殘渣 (正庚烷, 70°F, 30分鐘) / Extractives residue (n-Heptane, 70°F, 30 min)	mg/in ²	依據美國FDA 21 CFR 176.170 condition E (2017). / According to US FDA 21 CFR 176.170 condition E (2017).	0.2	n. d.	0.5
氯仿可萃取物 (8% 乙醇, 120°F, 24小時) / Net chloroform-soluble extractives (8% Alcohol, 120°F, 24 hr)	mg/in ²	依據美國FDA 21 CFR 176.170 condition E (2017). / According to US FDA 21 CFR 176.170 condition E (2017).	0.2	n. d.	0.5
氯仿可萃取物 (水, 120°F, 24小時) / Net chloroform-soluble extractives (D.I. Water, 120°F, 24 hr)	mg/in ²	依據美國FDA 21 CFR 176.170 condition E (2017). / According to US FDA 21 CFR 176.170 condition E (2017).	0.2	n. d.	0.5

備註(Note) :

1. MDL = Method Detection Limit (方法偵測極限值)
2. n. d. = Not Detected = below MDL (未檢出 / 低於MDL)

測試報告

Test Report

號碼(No.) : CT/2019/71325

日期(Date) : 2019/08/12

頁數(Page) : 3 of 3

晨翔紙業股份有限公司

CHEN XIANG PAPER CO., LTD.

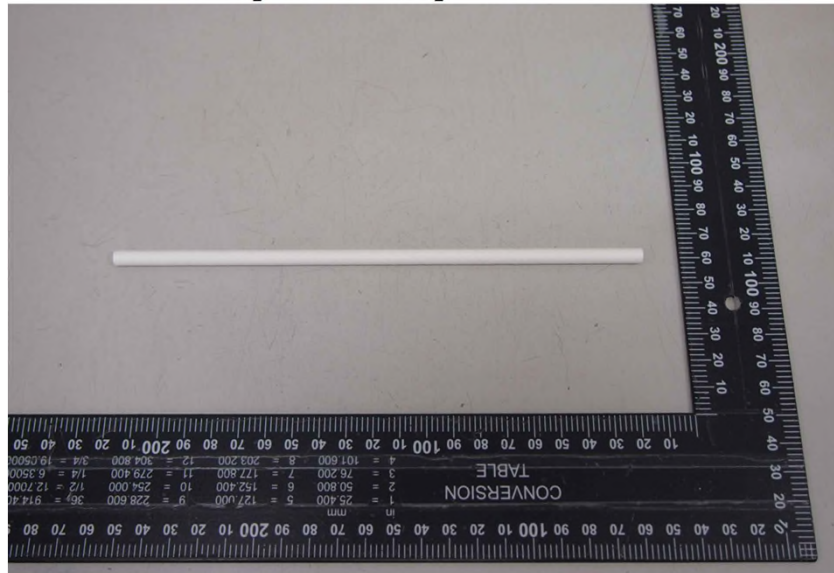
新北市新莊區五權二路24號8樓之2

RM. 2, 8F., NO. 24, WUQUAN 2ND RD., XINZHUANG DIST., NEW TAIPEI CITY 24892, R. O. C.

* 照片中如有箭頭標示，則表示為實際檢測之樣品/部位。*

(The tested sample / part is marked by an arrow if it's shown on the photo.)

CT/2019/71325



** 報告結尾 (End of Report) **